

Swivel castor with total lock EDT 151 TLSBAK

Extra Heavy Duty Series ED - Wheel TLSBA

-20 °C - +80 °C

+++
swivels easily

+++
wear resistant

+++
shock proof

+++
floor protective

+++
weather proof

Wheel



Tread: cast polyurethane, 85 ± 2 Shore A crowned - soft

Core: Die-cast aluminium alloy

Fork



For applications where a super strong and durable caster is required,
one tapered roller and one axial ball bearing,
dust protection ring,
very strong integrated Kingpin,
locked nut, grease nipple, wheel axle bolted,
finish – painted

Swivel castor with total lock Wheel-Ø A x width B mm: 150x50

Load Capacity kg: 575

Load capacity tested according to EN 12530 and EN 12527

Overall height H mm: 202

Dimension of top plate TP 135x110
mm:

Hole spacing HS mm: 105x80

Hole-Ø HD mm: 13

Swivel radius SR mm: 150

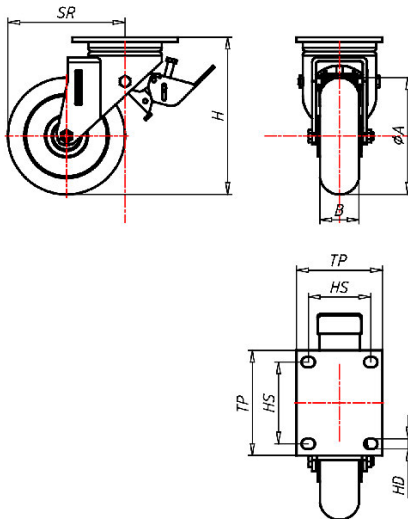
Wheel bearing: Ball bearing

Advantages

- ✓ crowned soft tread makes it very economic
- ✓ very silent in motion
- ✓ very low rolling resistance
- ✓ very revving
- ✓ high abrasion and tear resistance
- ✓ good chemical resistance

©Copyright 2024 Rollenbau GmbH, www.rollenbau.at 20.05.2024

ROLLENBAU



Applications

- Heavy duty dollies
- Trash container trucks
- Machinery moving dollies
- Racks